

# DINO<sup>®</sup> 180T



**DINO Lift<sup>®</sup>**

*Get Lifted<sup>™</sup>*

**T-SERIES**

# DINO® 180T



**Reliable and stable with long horizontal outreach**  
 – wide range of possibilities for working.

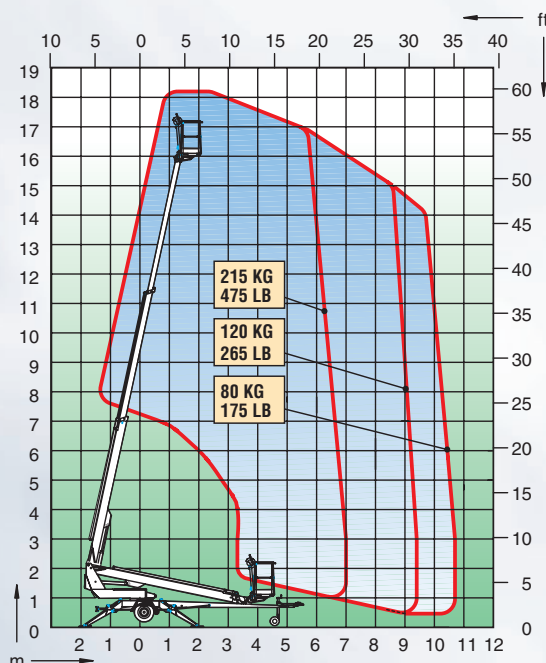


**Lightweight and well balanced**  
 – easy to tow and move at the site.



**Battery operated 180TB model**  
 – enables use wherever AC mains power is not available.

## Technical specification



Max. working height	18.0 m	59'
Max. platform height	16.0 m	52'5"
Max. outreach	10.7 m	35'
Support width	3.8 m	12'6"
Lifting capacity	215 kg	475 lb
Basket size	0.7x1.3m	2'4" x 4'3"
Boom rotation	cont.	cont.
Basket rotation	90°	90°
Boom control	proport.	proport.
Transport length	7.41 m	24'4"
Transport width	1.78 m	5'10"
Transport height	2.14 m	7'0"
Weight	1840 kg	4055 lb
Driving system	std	std
AC-socket in the basket	std	std
Electro motor	std	std
Petrol power pack	opt.	opt.
Gradeability	25%	25%

The specification is subject to change without notice.

T-series DINOs are lightweight, compact and easy to operate.

Hydraulic outriggers enable quick and easy set up.

Proportional controls and telescopic boom ensure stable and precise access to the work position even at long outreach.

### DINO Lift®

Dinolift Oy • Raikkolantie 145  
 FI-32210 Loimaa • Finland

Tel +358-2-76 25 900  
 Fax +358-2-76 27 160  
 Internet [www.dinolift.com](http://www.dinolift.com)